

MP3 GO

Instructions Manual

Preface

Thank you for using our product.

To make you operate this MP3 skillfully as soon as possible, we have prepared detailed manual with the product. You can get the knowledge of introduction of product, use and precautions of use, etc.

We have prepared this manual carefully and cautiously and information in this manual is reliable. However, there may be errors and omissions. We sincerely hope you can help to pick up our errors and omissions and understand us. But we will not assume responsibilities for the errors and omissions.

Please contact us through our customer hotline 800 202 204 if you have any trouble in using this product. Thanks for your cooperation!

Information in this manual may be changed without prior notice.

The copyright of information in this manual is protected. Any kind of photocopy or copy is prohibited without written permission in advance.

Introduction of interface and keys (see following drawing)

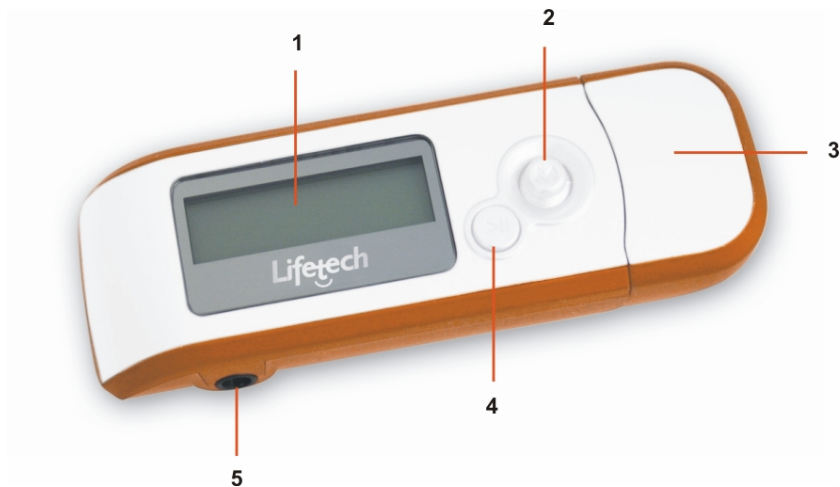
1-LCD

2- MODE

3- USB

4- On/ Play/ Pause/ Off

5- Headphone,



Contents

I. Instructions

II. How to Use

1. Connecting to PC
2. Data storing and music uploading
3. Turning on/off your MP3
4. Playing music
5. Indicating battery level

III. Use MP3 Player

1. Indication of playing status
2. Locking keys
3. FWD/REV key
4. Adjusting volume
5. Repeat/Record key
6. Deleting MP3 files

IV. Connect to PC and Realize Flash Disk Function

1. USB transmitting and MP3 file uploading
2. Installing driver under WIN98
3. Disconnecting USB
4. Formatting MP3

V. Specifications

VI. Accessories

I. Instructions

1. For safety, do not play your MP3 near moisture or liquid.
2. Do not play your MP3 in the surroundings extremely hot, cold or full of dust and moisture.
3. Do not disassemble or repair the product, or it will affect the quality warranty. This MP3 has no user-serviceable parts inside, please contact professionals if necessary.
4. Your hearing will be damaged permanently if you often turn the volume of your earphone very high. Therefore, it is suggested to adjust the volume to

a suitable level. Do stop playing your MP3 once tinnitus happens.

5. Unload the battery if you intend not to play your MP3 for a long time to prevent your MP3 being damaged by the leakage and corrosion of the battery.

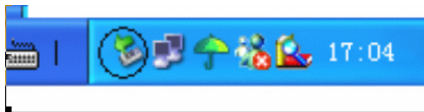
6. Do not fall your MP3 on the ground, which can scrape the surface of your MP3.

II. How to Use

1. Connecting to PC

Start your PC and insert this MP3 into USB interface of the computer directly. In this case, your MP3 can be powered by USB or USB data transmit is realized (USB indication will be displayed on the LCD after your MP3 has been connected to PC).

2. Data storing and music uploading



Your MP3 will be connected to PC through USB interface. It can be used as a flash disk (USB indication will be displayed on the LCD after your MP3 has been connected to PC). After the computer indicates that the transmission has been finished you must stop running the USB device safely by clicking the icon “Pull out or Eject the Hardware” on the taskbar at the right bottom corner. It is OK to copy only desired music into your MP3 without any third party programs.

3. Turning on/off your MP3

Press Play/Pause key for 2 seconds to turn your MP3. “HELLO” will appear on the LCD. Two seconds later, “88888” (music played last time and all music files) will appear. Now your MP3 is in MP3 mode. If no operation

made in Stop status within one minute, your MP3 will be turned off automatically and “OFF” will appear.


4. Playing music

In Play status, short press Mode key to choose EQ mode. Five types of EQ modes are provided to choose: Normal、POP Rock、Jazz and Classic. Short press Mode key to release and choose five types of EQ mode circularly. Long press Mode key to choose Play mode circularly. Three types of circular Play mode are supplied: Play in Order, Play One Song and Play All Songs Circularly. Long press Mode key to release and choose above three types of Play mode. In Play status, press Vol+/Vol- key to adjust the volume. Press Mode key to left to play previous song and right to play next song. Repeating function can be achieved by A-B key. In Play status, short press A-B key to repeatedly play the paragraph from point A to B.

5. Indicating the battery level

One AAA battery is required; it can last for about eight hours. The battery

life may vary due to different conditions, manufacturers and manufacturing dates. Please replace the battery if one of following problems happens:

- Icon  flashes.
- There is no response when any key is pressed. And there is still no response even the battery has been removed and reloaded.
- Replace new battery after old one has been removed for a few minutes

III. Use MP3 Player

1. Indication of playing status

While a song is being played, the number of this song, all music files, Play time, Play status, A-B repeat, type of music played (WMA or MP3), battery level, circular Play mode (Play in order, Play one song and Play all songs circularly), Play status (play or stop) will be displayed on the screen as follows:



2. FWD/REV key

Move Mode key left to previous song. In this way you can choose desired song.

3. Adjusting volume

In Play status, Move Mode key up to down. The wave will increase or decrease respectively.

4. Repeat key

In Play status, Move Mode key center, you can use the function of A-B repeat.

- (1) In Play status, short Move Mode key center to set Starting point A when you hear the Starting point of repeated paragraph.
- (2) Short Move Mode key center again to set ending point B when you hear the ending point of repeat paragraph. At this time, this set paragraph A-B will be played repeatedly.
- (3) Short Move Mode key center again to cancel the repeat when the paragraph of A-B is played circularly.
- (4) In stop status, If you want to repeat a song or recorded voice, you can use the Move Mode key center repeat.

5. Record key

In Stop status, long Move Mode key center to choose MP3 and VOL. Press Play key to play recorded file in VOL status. Short Move Mode key center to

release and choose REC and VOL. Short press Play key to stop recording.

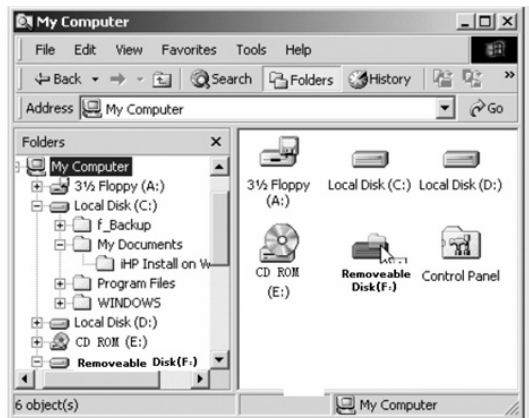
6. Deleting MP3 files

When you want to delete files and data in your MP3, you can connect your MP3 to PC and delete them.

IV. Connect to PC and Realize Flash Disk Function

1. USB transmitting and MP3 file uploading

- (1) Under WinME、Win2000、Winxp、Win2003 operating system, you need not install any driver program on your PC to connect your MP3. After you have connected your MP3 to USB, the icon “Movable Disk” will be displayed in the Windows Explorer as follows. At this time, your MP3 could be used as a common disk.



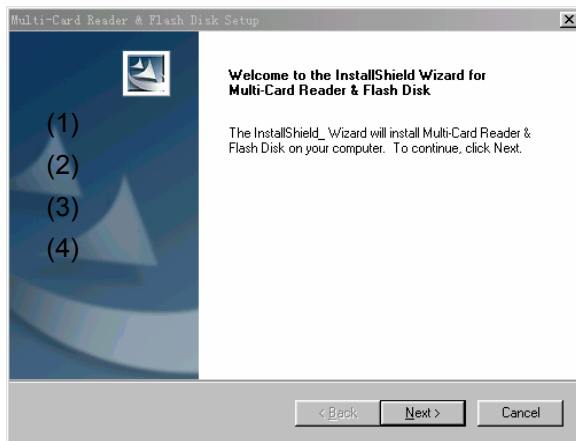
(2) If you connect your MP3 to the PC under WIN98/SE operating system for the first time, drive program must be installed.

2. Installing drive program under WIN98

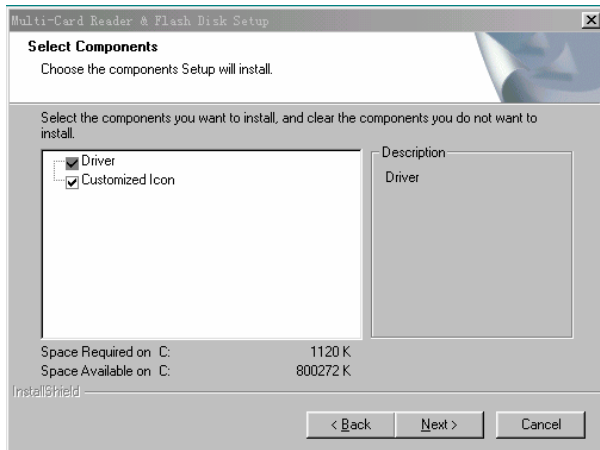
Under Windows Me/2000/XP and MAC OS 9.X operating system, you need not install any driver on your PC to connect your UMP3. However, if you connect your UMP3 to the PC under Windows 98/SE operating system for the first time, drive must be installed. Follow steps as follows:

- (1) Insert the disk of drive program attached into CD-ROM;
- (2) Use right key to start up disk of drive program and run the file "Driver letter and path\driver \SETUP.EXE". The following picture will appear:

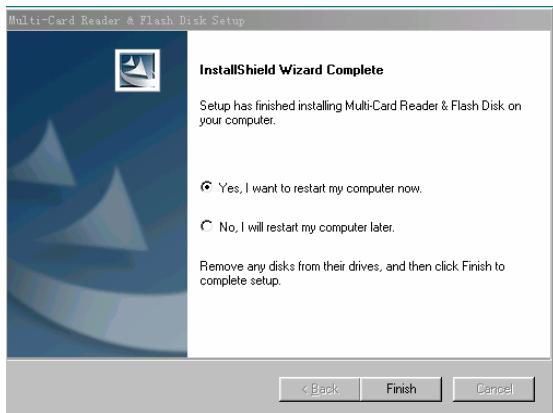
(3) Click “Next”, following picture will appear:



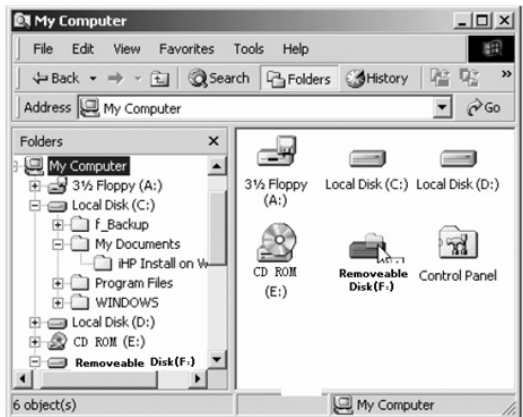
(4) Click “Next”, following picture will appear:



(5) Click “Finish” to finish installation. Restart your PC and insert your MP3 into USB interface on the computer. At this time, your MP3 could be used as a common disk.



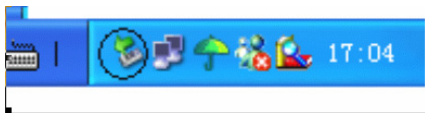
(6) If you want to uninstall your driver on WIN98 operating system, you can choose “Start—>Program—>Multi-card Reader & flash disk—>Uninstall Multi-card Reader & flash disk”.



3. Disconnecting USB

Follow following steps to disconnect your MP3 from PC after you have finished copy data:

- (1) Under WIN2000/ME/XP operating system, stop running the USB device safely by clicking the icon “Pull out or Eject the Hardware” on the taskbar at the right bottom corner and remove it from PC.



- (2) Under WIN98/SE operating system, remove your MP3 directly from USB interface when the LED stops blinking.

4. Formatting MP3

The file system of this MP3 is FAT format. If you want to format your MP3, you can click right key to choose “Format”. The file system you have chosen is FAT formatted.

V. Specifications

Items	Parameters
Music format	MPEG 1 Layer 3
Bit rate	56Kbps~256Kbps
Frequency range	20Hz~20KHz
Signal-noise ratio	$\geq 86\text{DB}$
Channel separation	$\geq 85\text{DB}$ (1KHZ signal reference)
Frequency response	$\leq 3\text{DB}$ (20HZ~20KHZ)
Output of earphone	L 4mW、R 4mW
EQ mode	Classic, Jazz, Rock,
Display	LCD
Interface	Compatible with USB1.1、2.0
Storage media	FLASH
Working current	$\leq 150\text{mA}$
Power off current	$\leq 15\mu\text{A}$
Battery	One AAA 7 battery
Play time	About 7 hours
File system	FAT

VI. Accessories:

- 1 hanging cord
- 1 disk of driver
- User's Manual
- 1 USB extension cord
- 1 advance stereo head phone.